

FOBA studio backgrounds, shooting tables and lamp stands. A big range of professional equipment.

**FOBA**<sup>®</sup>  
STUDIO-TECHNOLOGY

## Studio accessories – all around the subject

FOBA supplies complete systems for professional photographers. FOBA's main claim to fame include the FOBA COMBITUBE\* modular system, FOBA stands, tripods and heads, and FOBA ceiling rail systems ROOF-TRACK and MEGA-TRACK.

However, FOBA also carries a comprehensive array of useful studio equipment:

### FOBA shooting tables

Good studio tables take the hard work out of photography. FOBA carries several table types, designed by experienced specialists to satisfy even the most exacting photographer's requirements. Cast shadows are effectively neutralized, even with complex multiple lighting. FOBA tables harmonize perfectly with the well-known COMBITUBE\* system, and therefore profit from this system's many modular components; lights and accessories can be set up, displaced or removed in no time at all, extensions are a mere twist or two away - and the surrounding floor space remains uncluttered. The preformed, undulated acrylic sheets are just ideal for shooting blended backgrounds and floating objects, considerably reducing processing time and therefore costs.

### FOBA backgrounds

There is more behind good photography than lighting alone. FOBA keeps the background in mind and offers not only a wide selection of colourful background papers in three different widths, but also a versatile range of unrollers and stands to suit.

### FOBA lamp stands

FOBA lamp stands are based mainly on the worldwide renowned, modular COMBITUBE\* system. This gives them multiple functionality and great flexibility. There is almost no light position which cannot be achieved with one of FOBA's several lamp stand.

FOBA products are

- modular
- durable
- versatile

which means

- pleasant working conditions
- efficiency
- profitability

## Sustainable production

FOBA products are made in Switzerland according to the company's traditional environment-considerate manufacturing methods. First-class materials are processed with craftsmanship. FOBA's legacy of successful studio and photography equipment guarantees practical, well-proven and efficient products.



\* Visit [www.foba.com](http://www.foba.com) to learn more about FOBA's practical COMBITUBE system

A variety of mobile or fixed roll stands are available for FOBA background papers.

FOBA supplies a wide variety of background material, either in rolls or as individual sheets.

Design with light with FOBA studio lamp stands. Their modularity makes them incredibly versatile.

FOBA shooting tables have proven their worth over the years. The preformed acrylic sheets are just perfect to achieve blended and camaieu picture backgrounds, as well as shooting floating subjects.

Most products listed in this brochure are in matte black.

FOBA shooting tables can be fitted with casters for effortless transportation around the studio.

## The good life in an orderly studio

FOBA solves your background setup problems – with devices that have proven their worth in the best studios. Mobile or fixed background unrollers, easy to use and reliable, yet gentle to your paper backgrounds.



### DODRE

Triple unrolling device for wall or ceiling mounting (screws excluded\*), consists of:

- 1 **DORPO** triple hook strips
- 3 **DAPAO** clamping devices
- 3 **DAPSO** trailing edge strips for paper width 2.75 m

Weight: 11 kg (24 lb)



Install **DAPAU** rubber cleats on clamps to use them with cardboard cores with inner Ø up to approx. Ø 63 cm.



### DORPO

Pair of triple hook strips, hooks in descending length, for ceiling or wall fastening (screws excluded\*).

Length: 33.5 cm  
 Shortest hook: 12.0 cm  
 Longest hook: 19.5 cm  
 Weight: 2.0 kg (4.4 lb)



### DORPA

Pair of triple hook strips, hooks of equal length, for ceiling fastening. Especially for low-ceilinged studios (screws excluded\*).

Length: 33.5 cm  
 Hook: 12.0 cm  
 Weight: 1.7 kg (3.8 lb)



### DORPE

Pair of hooks for wall or ceiling fastening (screws excluded\*).

Hook: 12.0 cm  
 Weight: 470 g (1 lb)

\* Depending on the wall's or ceiling's composition (bricks, wood, concrete, etc.) different screws and studs must be used. It is best to clarify and decide on-site.



### DAPAO

Complete clamping device for background paper rolls with cardboard core, sturdy aluminium build. Consists of:

- 1 pair of clamp inserts for core Ø 46 – 60 mm
- 1 **DUPEE** chain wheel
- 1 **DUPIE** chain
- 1 **DABRO** brake

Weight: 1.5 kg (3.3 lb)

For larger inner core Ø up to 63 mm, use **DAPAU** rubber cleats. Special clamps for larger cores are available on request.

Generous distance between twist grip and clamp (approx. 10 cm) makes for easy assembly and operation.



**DAPAA** Pair of clamp inserts for unrollers, with brake, as used in **DAPAO**, but without wheel and chain (available separately).

Weight: 770 g (1,7 lb)



**DUPEE** Separate chain wheel for **DAPAO/DAPAA** clamps, plastic.

Weight: 70 g (0.2 lb)



**DUPIE** Separate chain for **DAPAO/DAPAA** clamps.

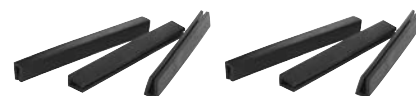
Length: 196 cm  
 Weight: 650 g (1.4 lb)



**DABRO** Separate plastic bearing with friction brake for **DAPAO/DAPAA** clamps. Prevents paper from unrolling accidentally. Braking friction can be set with a screw according to paper weight.

Hole for Ø 18 mm rods.

Weight: 40 g (0.09 lb)



### DAPAU

Rubber cleats for **DAPAO/DAPAA** clamp, set of 6. Increases **DAPAO/DAPAA** application range to tubes with inner Ø up to approx. 63 mm.

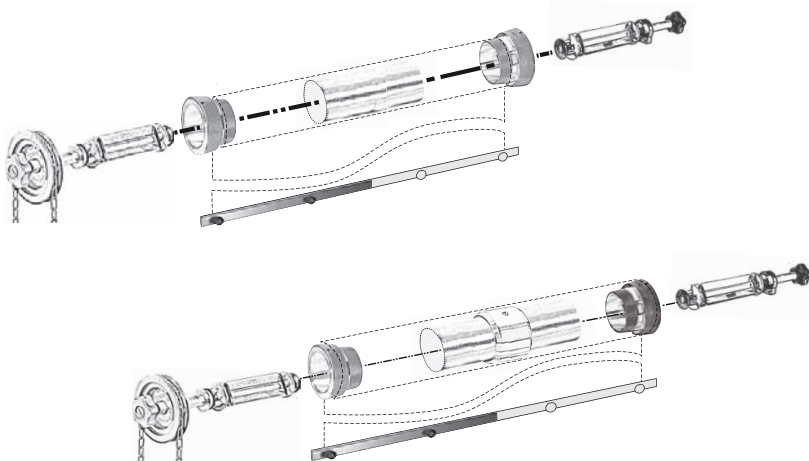
Length: 11 cm  
 Weight: 60 g (0.13 lb)

## Unrolling devices in modular concept

DAPAO/DAPAA clamps are inserted directly in the cardboard paper roll core. The wider the paper, the more rolls tend to sag in the middle after some time. Expensive background paper might easily get damaged.

DAPOA/DAPOI steel tube within the core will keep it from sagging. Cones inserted in the tube's extremities will keep cardboard core and tube rolling together as a unit when the chain wheel is turned.

Like most FOBA products, unrollers are modular in concept: DAPAO clamping device can be upgraded to maximum comfort at any time by adding steel tube and cones, thus keeping up with the photographer's requirements.



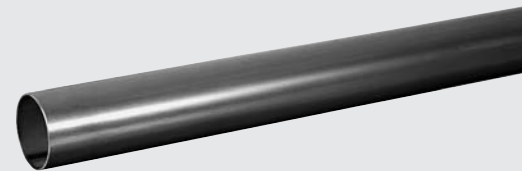
## Paper backgrounds on roll

Various colours according to reference/colour chart **B2000**  
(or at [www.foba.com](http://www.foba.com))

Product n°	B1xx1*	B1xx0*	B1xx3*
Paper width or roll length	1.35 m	2.75 m	3.55 m
Paper length	11 m	11 m	32 m
Inner Ø of cardboard core	54 mm	54 mm	67 mm
Weight	2.4 kg (5.3 lb)	4.8 kg (10.6 lb)	19.0 kg (41.9 lb)

\* xx indicates the colour code according to chart B2000

FOBA product range also include plastic sheeting. For more information of FOBA's TT-Plast range, please refer to this brochure's back cover page.



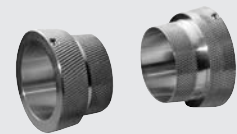
Steel tube for background paper rolls. Prevents sagging of the cardboard core and damage to the paper.

### DAPAO

For paper width:	2.75 m
Inner Ø:	47 mm
Outer Ø:	50 mm
Length:	2.845 m
Weight:	4.8 kg (10.6 lb)

### DAPOI

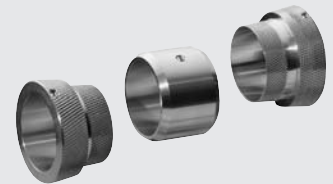
For paper width:	3.55 m
Inner Ø:	47 mm
Outer Ø:	50 mm
Length:	3.595 m
Weight:	6.0 kg (13.2 lb)



### DAPOE

Roll holder fittings, set of 2 cones for paper width 2.75 m, correspond to DAPAO steel tube. Ensure that paper roll and steel tube rotate together.

Inner Ø:	50.5 mm
Weight:	205 g (0.45 lb)



### DAPOR

Roll holder fittings, set of 2 cones and 1 cylinder for paper width 3.55 m, correspond to DAPOI steel tube. The cones ensure that paper roll and steel tube rotate together; the middle cylinder keeps the cardboard core from sagging onto the steel tube.

Inner Ø:	50.5 mm
Weight:	310 g (0.7 lb)



Aluminium trailing edge strip for background papers, in two pieces. Helps to keep paper flat on the floor, reducing paper scuffing and wear.

### DAPSI

For paper width:	1.35 m
Length:	1.30 m
Weight:	0.7 kg (1.5 lb)

### DAPSO

For paper width:	2.75 m
Length:	2.75 m
Weight:	1.4 kg (3.0 lb)

### DAPSE

For paper width:	3.55 m
Length:	3.50 m
Weight:	1.8 kg (3.95 lb)



### DASRO

Mobile stand to unroll and coil up 4 individual paper rolls, having a width of 2.75 m each (clamping device DAPAO not included).

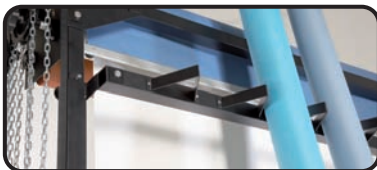
For paper width	2.75 m
Min. height:	2.2 m
Max. height:	3.3 m
Stand width:	3.1 m
Caster Ø:	74 mm
Weight:	approx. 30 kg (66 lb)



### Top DASRO equipment

To make the most out of your mobile unroller stand, we recommend:

- 4 **DAPAO** steel tube
- 4 **DAPOE** fittings
- 4 **DAPAO** clamping device
- 4 **DAPSO** trailing edge strip



You can carry 6 additional background paper rolls around on DASRO. They fit nicely in the roll holder at the back.



### CORPO

A pair of fork holder for DAPAO/DAPAA clamps on COMBITUBE\* elements or onto the telescope tube STAPI. Bottom 3/8" tap. Interchangeable installation on COMBITUBE\* elements with tapped sleeve **CEHUO**.

Weight: 240 g (0.53 lb)



### CEHUO

Sleeve for various interchangeable adapters (see page 14), among others fork holder **CORPO**.

Female COMBITUBE\* 3/8" connector at bottom.



Assembly detail of mobile COMBITUBE roll stand with clamping device **DAPAO**, fork holder **CORPO** and adapter sleeve **CEHUO**.

Mobile roll stand made with COMBITUBE\* elements. Width according to use. Easy to assemble, light and handy, just right to take along on field work.

Parts required for this particular build:

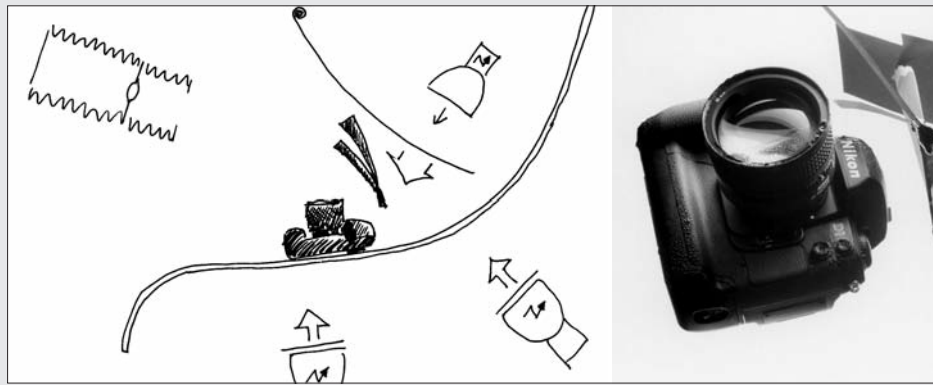
- 2 **COSTO/COSNO AS** folding tripods
- X **COMBITUBE (CONRO, COKRO, etc.)** according to height
- 2 **CEHUO** tapped sleeves
- 1 pair of **CORPO** fork pieces
- 1 pair of clamp inserts (**DAPAO**) and
- 1 **DAPSI** or **DAPSO** trailing edge strip, according to paper width



\* Visit [www.foba.com](http://www.foba.com) to learn more about FOBA's practical COMBITUBE system

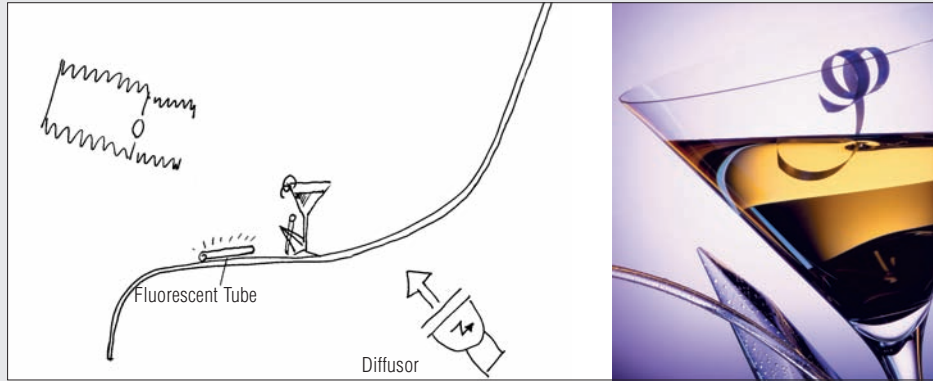
**No shadows on your work**

FOBA shooting tables are born of photographer's practical experience and of their quest for perfect lighting conditions to reduce or even eliminate burdensome retouching. The result: FOBA tables are equipped with a special synthetic surface, processed to colourlessness and mattness and rendered entirely non-reflecting through complex treatment. The surface is frosted for absolutely uniform transparency.



**True colours**

FOBA acryl sheets are colourless and ensure uniform transparency with both flash and constant light.

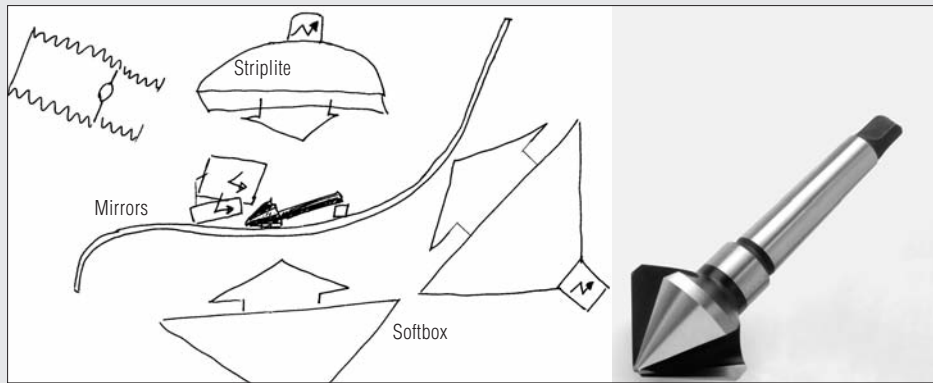


**Fade and blend**

FOBA tables are equipped with preformed sheets, so shooting blended or fading backgrounds becomes easy. Coloured light filters allow the photographer to create interesting effects.

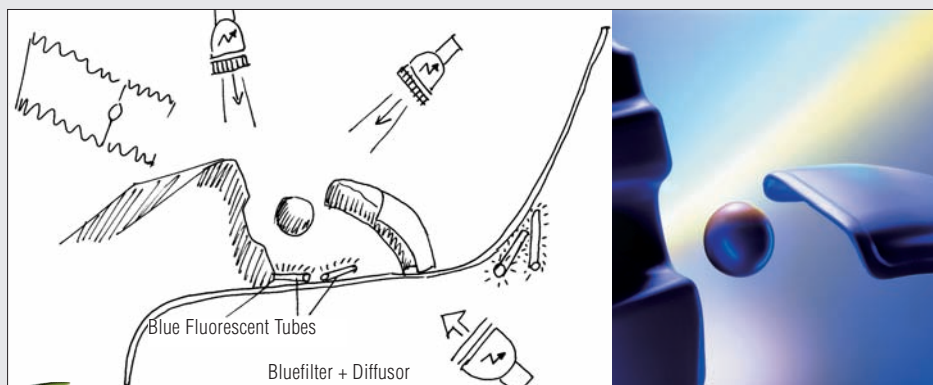
**No shadows anywhere**

No part of the FOBA tables aluminium frames crosses the front of the acryl sheet. This characteristic, together with the sheet's curved front, make shadow-free frontal shots possible – a great plus.

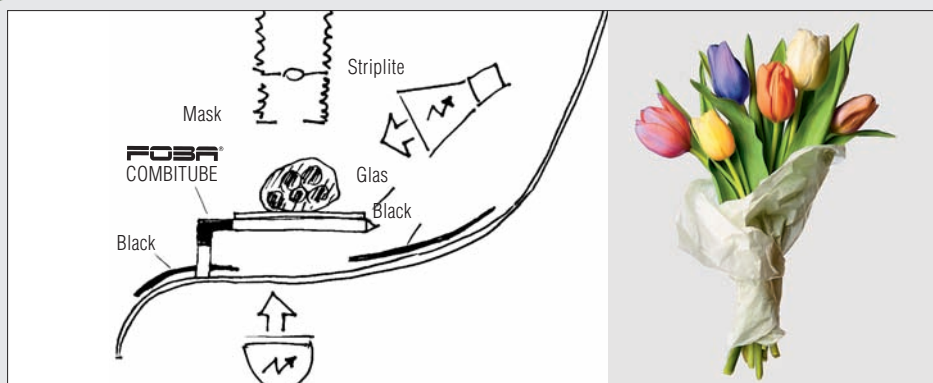


**COMBITUBE\* makes it happen**

FOBA's table frames are equipped on the sides and top with COMBITUBE 3/8" connections. Help yourself to the advantages of FOBA's modular, versatile COMBITUBE\* system elements to position lamps, screens, or the subject itself on the table – and without taking up any floor room, either.



Illustrationen: D. Savini



\* Visit [www.foba.com](http://www.foba.com) to learn more about FOBA's practical COMBITUBE system

## Versatile Mini Shooting Table

FOBA's mini shooting table DIMIC complements well the lower part of the product range. It is just as sturdy as the bigger models; it is as easily dismantled or mounted, has a mat surface, a colour-fast sheet and is basically shadowless. Thanks to its COMBITUBE\* adaptors and other connecting elements, the table can be complemented and extended at will.

This table is especially adequate for small objects, even if they are heavy. The most comfortable way to perform shootings with it is to put it on a table. Thanks to its easy and fast dismantling it can be used only occasionally, when needed, and else stored in a very space-saving manner.



**DIMIC** mini shooting table

Width:	59 cm (23.2")
Length:	63 cm (24.8")
Height:	70.5 cm (27.8")
Height of the work surface from floor:	23.5 cm (9.3")
Flat work surface (Width x Depth):	45 cm x 30 cm (18"x12")
Upper surface of plate:	reflex free, mat
Thickness of plate DIMIA:	3 mm (0.12")
Translucence of plate:	ca. 50%
Load capacity, distributed load:	40 kg (88.2 lbs)
Weight:	7 kg (15.4 lbs)



**DIMIR 40** handy COMBITUBE kit to extend the legs (40 cm, 15.7") of the table DIMIC.

**DIMIR 40** is composed of:

- 4 COKRO AS, COMBITUBE 40 cm (15.7")
- 2 COGUO, plastic foot, set of 2
- 2 CODIO, cross connector
- 2 CESTO, plate with 3/8" stub screw
- 2 COTWE, tube with 2 female COMBITUBE connections



Thanks to COMBITUBE, there is a limitless variety of possibilities for the mounting of:

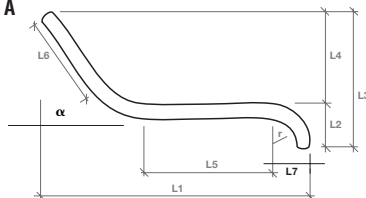
- the object being shot
- diffusers and reflectors
- lamps
- the camera, if needed
- the legs.

The work space on the plate stays free and the one around the table doesn't get crammed.

Dimensions of FOBA acryl sheets. Values L1 to L7, r,  $\alpha$  are approximate.

Type of the shooting table	Name of the table	Acryl plates / sheets													
		Name	Width of the plate	Usable width	Thick-ness	L1 cm	L2 cm	L3 cm	L4 cm	L5 cm	L6 cm	L7 cm	r cm	$\alpha$	
Mini, Type A	DIMIC	DIMIA	50.5 cm	50.5 cm	3.0 mm	54	11	59	48	30	40	7	7	70°	
Small, Type A	DIMIUI	DIDRI	90.5 cm	90 cm	3.0 mm	83	17	60	43	45	31	16	23	50°	
Middle, Type B	DIMIL	DAPLE	123 cm	120 cm	3.0 mm	171	25	-	-	50-140	-	25	35	-	
Large, Type A	DIGRO	DOPLE	130 cm	123 cm	6.0 mm	200	22	100	78	105	83	27	37	60°	
	DIBRO	DIBRE	159 cm	152 cm											

**Type A**



**Type B**



Acryl sheets being flexible, table and sheet dimensions in this catalogue are approximate.



## There's more

To make the most out of your FOBA table, a large choice of additional equipment is available, for instance:

- acryl diffuser cones and tunnels
- TT-Plast sheets in various colours
- COMBITUBE\* elements to set up lamps, filters or the subject itself. All FOBA tables are equipped with COMBITUBE\* adapters.
- casters for more mobility in the studio.

FOBA tables undisputed usefulness is due partly to the diversity and number of accessories available.

**All advantages at a glance:**

- colourless, matte acryl sheets
- preformed for shadowless shots
- sturdy
- large choice of accessories



**DIDRI**  
Separate acryl sheet for shooting table  
**DIMIU**

Width:	90.5 cm
Length:	100 cm
Thickness:	3 mm
Max. load (distributed):	approx. 25 kg (55 lb)
Weight:	4.2 kg (9.3 lb)



**DIMIL**, detail view of the sheet tilting device which allows the top of the sheet to be fixed any position from upright to flat.

**DAPLE**  
Separate acryl sheet for shooting table  
**DIMIL**.

Width:	123 cm
Length:	170 cm
Thickness:	3 mm
Max. load (distributed):	approx. 20 kg (44 lb)
Weight:	8.0 kg (17.6 lb)

**DIMIE**  
Separate frame for shooting table **DIMIL**, hollow 25 x 25 mm aluminium tubes.

Weight:	6.6 kg (14.5 lb)
---------	------------------



Each shooting table from FOBA (DIMIU, DIMIL, DIGRO, DIBRO) includes the following COMBITUBE\* elements:

- COARO AS, COMBITUBE 20 cm long
- COFLU, gooseneck arm 40 cm long
- COKLE, clamp tapped 3/8"

\* Visit [www.foba.com](http://www.foba.com) to learn more about FOBA's practical COMBITUBE system

## DIMIU

Shooting table, small. Preformed acryl sheet, front and back undulations. Especially designed for smaller studios, easy to assemble and take apart, light, takes up little room.

Consists of:  
1 **DIDRI** acryl sheet  
1 **DIDRU** aluminium tube frame

DIDRI sheet thickness:	3 mm
Flat surface (width x depth):	80 x 45 cm
Width:	90.5 cm
Length:	84 cm
Flat surface height from floor (no casters):	71.5 cm
Surface of plate:	reflex-free, matt
Translucency of plate:	ca. 50%
Max. load (distributed):	approx. 25 kg (55 lb)
Weight:	8.4 kg (19 lb)

## DIDRU

Separate frame for shooting table  
**DIMIU**, hollow 25 x 25 mm aluminium tubes.

Weight:	4.2 kg (9.3 lb)
---------	-----------------



## COLRI

Caster for **DIMIL** and **DIMIU** tables, with brake, set of 4.

Increases table height by approx.:	7.5 cm
Caster Ø:	50 mm
Weight:	185 g/unit (0.4 lb/piece)

## DIMIL

Shooting table, middle size. Sheet can be tilted by 90°, front part preformed. Adjustable back rungs. The upper rung can be set in 5 different positions to follow the sheet angle; bottom rung has 3 positions to allow floor lights comfortably through.

Consists of:  
1 **DAPLE** acryl sheet  
1 **DIMIE** aluminium tube frame  
(**COLRI** casters not included)

DAPLE sheet thickness:	3 mm
Flat surface (width x depth):	120 x 50 – 140 cm
Width:	123 cm
Length:	110 – 197 cm
Flat surface height from floor (no casters):	75 cm
Surface of plate:	reflex-free, matt
Translucency of plate:	ca. 50%
Max. load (distributed):	20 kg (44 lb)
Weight:	15.7 kg (34 lb)

FOBA acryl sheets are preformed in simple or double undulation. They can do more than just lay on a table: set sideways (e.g. between 2 upright COMBITUBE on **CESRA** base), they make effective vertical screens whose form can be used to create interesting lighting effects on the objects.



Large FOBA shooting tables are equipped with preformed sheets with double undulations. Sturdy side brackets are equipped with COMBITUBE\* connectors, where any of this well-known system's elements can be installed.

Flat acryl sheet **DAPLU** is available separately to protect the table's own sheet from damage.

Large shooting table **DIGRO**, consisting of:

- 1 **DOPLE** preformed acryl sheet
- 1 **DOPLO** side brackets pair
- 4 **CONRO AS** 80 cm COMBITUBE\*
- 14 **CODEA** right-angle connectors
- 2 **COGUO** rubber stoppers, set of 2
- 4 aluminium tubes 1185 mm
- 2 aluminium tubes 788 mm
- 2 aluminium tubes 930 mm

Technical information:

DOPLE sheet thickness:	6 mm
Flat surface (width x depth):	123 x 105 cm
Width:	130 cm
Length:	approx. 180 cm
Flat surface height from floor (no casters):	87 cm
Surface of plate:	reflex-free, matt
Translucency of plate:	ca. 50%
Max. load (distributed):	approx. 60 kg (132 lb)
Weight:	50 kg (110 lb)

Large shooting table **DIBRO**, consisting of:

- 1 **DIBRE** preformed acryl sheet
- 1 **DOPLO** side brackets pair
- 4 **CONRO AS** 80 cm COMBITUBE\*
- 14 **CODEA** right-angle connectors
- 2 **COGUO** rubber stoppers, set of 2
- 5 aluminium tubes 1485 mm
- 2 aluminium tubes 788 mm
- 2 aluminium tubes 930 mm

Technical information:

DIBRE sheet thickness:	6 mm
Flat surface (width x depth):	153 x 105 cm
Width:	160 cm
Length:	approx. 180 cm
Flat surface height from floor (no casters):	87 cm
Surface of plate:	reflex-free, matt
Translucency of plate:	ca. 50%
Max. load (distributed):	approx. 60 kg (132 lb)
Weight:	58 kg (128 lb)

## DOPLE

Separate acryl sheet for shooting table **DIGRO**.

Width:	130 cm
Length:	200 cm
Thickness:	6 mm
Max. load (distributed):	approx. 60 kg (132 lb)
Weight:	23 kg (51 lb)

## DIBRE

Separate acryl sheet for shooting table **DIBRO**.

Width:	160 cm
Length:	200 cm
Thickness:	6 mm
Max. load (distributed):	approx. 60 kg (132 lb)
Weight:	29 kg (64 lb)



## DOPLO

Separate side brackets pair for shooting tables **DIGRO** and **DIBRO**, with 4 COMBITUBE\* connectors per bracket.

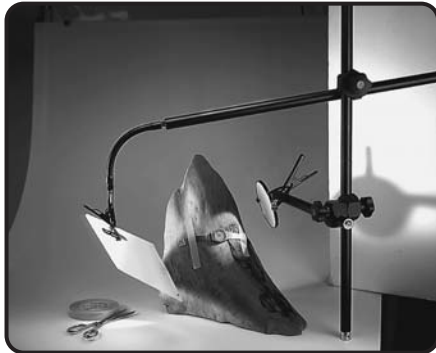
Length:	120 cm
Weight:	6.6 kg (14.5 lb)



## COLRU

Separate caster for shooting tables **DIGRO** and **DIBRO** or for COMBITUBE\*. Increases table height by approx. 10 cm.

Caster Ø:	50 mm
Load capacity:	ca. 30 kg (66.1 lbs)
Weight:	300 g (0.7 lb)



Swivel arm **CAMUN**, a couple of other COMBITUBE\* elements. This simple combination will help you master the most complex setups.



Acryl diffuser tunnels, just right for FOBA tables. Suppress shadows and reflected light effectively.

**DAPLI**

Acryl diffuser tunnel for **DIMIU**  
small sized table

Thickness:	3 mm
Length:	78 cm
Width:	47 cm
Height:	41 cm
Weight:	2.1 kg (4.7 lb)

**DAPLO**

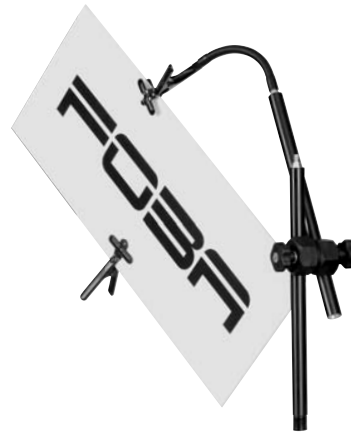
Acryl diffuser tunnel for **DIMIL**  
middle sized table

Thickness:	3 mm
Length:	99 cm
Width:	55 cm
Height:	48 cm
Weight:	3.5 kg (7.8 lb)

The following products of COMBITUBE\* elements, alone or assembled, bring additional functionality to FOBA shooting tables and facilitate the setting up for shooting sessions, without taking up any additional floor space. They can be extended or modified with further modular COMBITUBE\* elements, thereby opening almost unlimited possibilities.



Articulated 360° connector **COGEU** gives the swivel arm great, continuous mobility. Sliding weight **CEGOU** counterbalances even heavy loads. Safety ring **CEGEE 25**, at the end of the COMBITUBE, prevents the weight from sliding off accidentally.



**CAMUN**

Swivel arm, to be fixed directly onto the shooting table (also called table-top arm). Swivels in steps of approximately 7°.

Consists of:

- 2 **COKRO AS** 40 cm COMBITUBE\*
- 1 **COGEA** articulated connector, 7° steps
- 1 **COFLO** gooseneck arm 20 cm
- 1 **COKLE** COMBITUBE\* clamp, tapped 3/8"
- 1 **COKLO** COMBITUBE\* clamp

Weight:	1.2 kg (2.6 lb)
---------	-----------------



**COMEN**

Holder kit with touch fastener and gooseneck arm.

Consists of:

- 1 **CEBRO** small support plate
- 1 **COFLO** gooseneck arm 20 cm
- 1 **COFLA**, holder plate with Velcro, 8 fleece stickers (**COFLE**) included

Weight:	1.37 kg (3 lb)
---------	----------------



Set up filters, mirrors and other flat objects quickly and easily, and remove them just as fast. The touch fastening makes it possible. In a nutshell: a small but very useful helper on your shooting table.



**COFLA**

Holder plate with Velcro, tapped 3/8", including 8 adhesive fleece stickers (**COFLE**).

Plate Ø:	42 mm (1.65")
Weight:	40 g (0.1 lb)



**COFLE**

Adhesive fleece stickers to holder plate COFLA, or to secure a laptop on holder ARTEU. Set of 8.

Pad Ø:	40 mm (1.57")
Weight of set:	10 g (0.02 lbs)

## Perfect light

FOBA acryl cones and tunnels let you shoot shiny subjects without shadows or reflexes, but also without complex lighting. They are a great help when shooting pictures for catalogues or ads, replacing complicated and often improvised lighting rigs.



### DUPLI

Acryl diffuser cone, small.

Height:	21.5 cm
Top Ø:	11 cm
Base Ø:	19.5 cm
Weight:	430 g (0.9 lb)



### DUPLE

Acryl diffuser cone, large.

Height:	50 cm
Top Ø:	15 cm
Base Ø:	50 cm
Weight:	2.1 kg (4.6 lb)



Shooting setup with small cone **DUPLI**. The camera is supported by table clamp stand **ASNEO** with tilting head **ASMIO**.



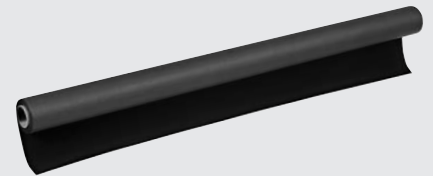
A nice, soft light effect achieved with large diffuser cone **DUPLE**.



### DAPLU

Acryl sheets can be used for special light effects and are quite useful in the studio. They can be placed horizontally above or underneath the subject, but also vertically as here (**COMBITUBE\*** elements available separately). FOBA acryl sheets are colourless, one surface is frosted, the other side is glossy and reflecting.

Length:	123 cm
Width:	100 cm
Thickness:	3 mm
Weight:	3.8 kg (8.4 lb)



**DITRE** Non-reflecting velvet-like background, matt black.

Width:	1.32 m
Length:	5.9 m
Cardbord core, inner Ø:	54 mm
Weight:	1.7 kg (3.7 lb)



**DITRO** FOBA diffusor sheet, opaline. Translucency of the diffusor sheet **DITRO** approx. 50%

Width:	1.37 m
Length:	5.4 m
Thickness:	0.26 mm
Cardboard core, inner Ø:	54 mm
Weight:	2 kg (4.4 lb)

Translucency of FOBA's acryl sheets and other acryl products is ca. 50%

\* Visit [www.foba.com](http://www.foba.com) to learn more about FOBA's practical **COMBITUBE** system

## Reliability afoot

Most of FOBA's several lamp stands are based on the well-known modular COMBITUBE\* system. They are available on flat supports, casters or folding tripods. The tubes come in either 30 mm or 25 mm diameter. Most are equipped with a sliding clamp; lamps can be lifted, lowered or turned full circle with just one hand. They can also be set on top of an upright with one of an interchangeable sleeve.

Of course, all advantages of the COMBITUBE\* system are also available for the FOBA lamp stands. Add, remove or replace filters, diffusers and other equipment quickly and easily.

The modular concept of FOBA's equipment has proven its worth over decades. FOBA lamp stands, sturdy and reliable, are easily modified to suit any specific activity, and are also multifunctional – a considerable plus for efficiency but also, and not least, for economy.

## Lamp stands supports at a glance

- more versatile
- more modular
- more mobile



### CESRO

Dolly, large model. Used for both high settings (up to 3 m) and floor positions. Casters equipped with brakes. Occupies floor space corresponding to a 77 cm isosceles triangle. For Ø 30 mm tubes (SANRO); sleeve for Ø 25 mm tubes or COMBITUBE\* included.

Height:	15 cm
Caster Ø:	100 mm
Weight:	21 kg (46.3 lb)



### STARE

Small dolly, especially to place lamps close to the floor and still be able to move them around. Includes lamp adapter RODEE. For greater stability add weighting plate CESRU. Occupies floor space corresponding to a 42 cm isosceles triangle. For Ø 25 mm uprights (COMBITUBE\*).

Height:	9.5 cm
Caster Ø:	50 mm
Weight (RODEE included):	4.8 kg (10.6 lb)



### COSTO

Folding COMBITUBE\* heavy duty tripod, black steel. For tubes Ø 25 mm.

Height folded:	95 cm
Weight:	3.2 kg (7.0 lb)



### COSNO AS

Folding COMBITUBE\* lightweight tripod, black aluminium. For tubes Ø 25 mm.

Height folded:	65 cm
Weight:	760 g (1.7 lb)



### CESRA

Large support plate with handle and male COMBITUBE\* connector. Protective felt underlay. No legs make it handier than a tripod. For greater stability add weighting plate CESRU.

Diameter:	26.5 cm
Plate height:	24 mm
Weight:	9.5 kg (20.9 lb)



### CESRU

Weighting plate for the CESRA large support or STARE small dolly to increase stability; with two M8 tapped holes for a handle.

Outside diameter:	26.5 cm (10.2")
Height:	24 mm (0.9")
Hole diameter:	26 mm (1")
Weight:	9.4 kg (20.7 lbs)



Close up of **STARE** dolly. A strong clip spring clasps the COMBITUBE\* almost all the way round without damaging it.

## Lamp holders

The FOBA product range includes 2 lamp holders (sliding clamp, exchange sleeve) corresponding to a large selection of interchangeable adapters. They make moving lamps or changing setups quick and easy.



Sleeve for various interchangeable adapters. The bottom has either a female COMBITUBE\* connector (cone and 3/8" tap) or a simple 3/8" tap; therefore, it can be installed onto lamp stand uprights (COMBITUBE\* element or STAPI telescopic upright).

Inner Ø, top: 18 mm

CEHUA	CEHUO
Bottom tapped 3/8"	Female COMBITUBE* connector (cone and 3/8" tap) below
Height: 4 cm	Height: 5 cm
Weight: 100 g (0.2 lb)	Weight: 130 g (0.3 lb)

### SAONO

For Ø 30 mm tubes (SANRO)

Distance mid-tube to mid-sleeve:	21 cm
Front sleeve inner Ø:	18 mm
Weight:	680 g (1.5 lb)

### CEONO

For Ø 25 mm tubes and COMBITUBE\*

Distance mid-tube to mid-sleeve:	21 cm
Front sleeve inner Ø:	18 mm
Weight:	690 g (1.5 lb)



### CEONO/SAONO

Sliding clamp with trigger, smooth and continuous movement. The front sleeve can be fitted with various interchangeable adapters.

## Lamp stand uprights at a glance

### SANRO 2 / SANRO 3

Stainless steel upright, goes with large dolly **CESRO**.

Length:	2 m / 3 m
Outer Ø:	30 mm
Weight:	2.6 kg (5.7 lb) / 4.0 kg (8.8 lb)

### COMBITUBE

Steel or aluminium tubes with one male and one female COMBITUBE\* connector (cone and 3/8" thread or tap). In theory, there is no limit to the length attached COMBITUBES can reach. Aluminium tubes are anodized black, steel tubes are nickel-plated silver. Five standard lengths are available:

	alu	steel
<b>COKTO</b>	160 cm	COKTO AS COKTO CL
<b>CONRO</b>	80 cm	CONRO AS CONRO CL
<b>COKRO</b>	40 cm	COKRO AS COKRO CL
<b>COARO</b>	20 cm	COARO AS COARO CL
<b>COTMA</b>	6 cm	COTMA AS COTMA CL

### STAPI

Telescope tube, 3 elements. Female COMBITUBE connector at bottom, therefore extendable with COMBITUBE\* from below. Top with lamp adapter 5/8" and additional 3/8" thread.

Upper element Ø:	16 mm (5/8")
Lower element Ø:	25 mm
Extension:	73 cm – 179 cm
Weight:	720 g (1.6 lb)

Interchangeable adapters at 18 mm (0.7") diameter for sliding clamps **CEONO / SAONO**, extension **CEONA** and sleeves **CEHUA / CEHUO**:



### CEBLI

All-purpose lamp adapter, 5/8"

Length:	7 cm
Bottom:	3/8" inner thread
Weight:	120 g (0.25 lb)



### CEBLA

Adapter for Broncolor lamps.

Top:	3/8" thread
Bottom:	3/8" tap
Length:	8 cm
Weight:	80 g (0.02 lb)



### CEBLO 3/8" / CEBLO 1/4"

Interchangeable adapter with 3/8" or 1/4" thread. Tighten with a metal point through the hole.

Length:	3 cm
Weight:	60 g (0.1 lb)



### COLBE

Interchangeable adapter with 3/8" thread and wing nut, to attach various components.

Length:	5.5 cm
Weight:	85 g (0.19 lb)



### CEONA

Sliding clamp extension. The front sleeve takes the same interchangeable adapters and holders as CEONO/SAONO brackets.

Extension:	8.5 cm
Weight:	325 g (0.71 lb)



### CEPRO

Interchangeable adapter with adjustable and removable hook.

Height:	5 cm
Hook length:	12 cm
Bottom:	3/8" inner thread
Weight:	160 g (0.3 lb)

**CORPO** fork (cf. page 6)

## Commonly used assemblies

FOBA keeps the most current base, uprights and lamp holder combinations at the ready in practical sets with a single order number.



### STARI 2 / STARI 3

Mobile lamp stand on braked dolly, very stable and yet easy to move around.

Kit consists of:

- 1 **CESRO** heavy duty dolly
- 1 **SANRO** stainless steel upright, Ø 30 mm, (STARI 2: 2 m, STARI 3: 3 m)
- 1 **SAONO** sliding clamp
- 1 **CEBLI** all-purpose lamp adapter

Caster Ø:	100 mm
Weight STARI 2:	25 kg (55.1 lb)
Weight STARI 3:	26.4 kg (58.2 lb)



### COMON

Lamp stand on plate with sliding clamp for quick and precise lamp positioning. Useful for placing lights low down (20 cm above the floor) or up to 1.6 m. Can be extended with additional COMBITUBES\*. For greater stability add weighting plate CESRU.

Kit consists of:

- 1 **CESRA** support, large
- 2 **CONRO AS** 80 cm COMBITUBE
- 1 **CEONO** sliding clamp
- 1 **CEBLI** all purpose lamp adapter

Height:	1.65 m
Weight:	12 kg (24 lb)



### STAPU

Adjustable stand, on folding aluminium tripod and with telescopic upright. Can be extended by adding COMBITUBES from below.

Kit consists of:

- 1 **COSNO AS** folding lightweight tripod
- 1 **STAPI** telescopic upright

Height, open:	1.96 m
Length, closed:	0.89 m
Weight:	1.45 kg (3.2 lb)



Lamp stand **COMON**, caught getting very close to shooting table **DIMIL**.

## More modular lamp stand assemblies



Round support **CESRA** with telescopic upright **STAPI**.



COMBITUBE\* **COKTO AS** with sliding clamp **CEONO**, on folding heavy duty tripod **COSTO**.



Telescopic upright **STAPI** on small **STARE** dolly, with weight **CESRU** added for additional stability.



The low-down on lamp stands: small **STARE** dolly with lamp adapter **RODEE**.

## SUDRA: The very practical tripod fixation for small power packs

- If the lamp stand is moved, the power pack always comes along automatically.
- There are less annoying cables on the floor.
- The weight of the power pack on the lamp stand helps to make it more stable.



Technical data:

Inner measures:	
Length:	15.2 cm
Width:	8.6 cm
Max. aperture of clamp:	
45 mm for flat constructions and for tubes with a diameter of 40 mm	
Weight:	960 g (2.1 lb)



Very handy lamp stand made of elements from the COMBITUBE system\*, consisting of a folding tripod with a telescopic upright (STAPU), together with a lamp and a power pack (Ranger of Elinchrom): they build up a mobile unit!



**CESTA**  
Plate for COMBITUBE\* end, includes wing nut tapped 3/8".

Diameter:	80 mm (3.1")
Height:	28 mm (1.1")
Weight:	130 g (0.29 lbs)

## Thread converters



**BALME**  
Reversible thread / tap converter 1/4" to 3/8", as well as 3/8" to 1/4".  
Set of 5 pieces.



**CEBLO 1/4"**  
Thread converter from 3/8" to 1/4" thread, radially bored for tightening bar.

Top:	1/4" male thread
Bottom:	3/8" female thread
Length without male thread:	30 mm (1.2")
Outside diameter:	18 mm (0.7")
Weight:	50 g (0.1 lbs)



Close-up of top plate **CESTA** on an upright COMBITUBE.



Even yoked lamps can be attached on an upright COMBITUBE\* with top plate **CESTA**.



**RODEE**  
Lamp adapter, top 5/8", bottom female COMBITUBE\* connector.

Top 3/8" male thread	
Outside Ø top:	16 mm (5/8")
Outside Ø bottom:	25 mm (1")
Lower end:	
COMBITUBE female cone	
Height w/o top thread:	72 mm (2.8")
Weight:	120 g (0.26 lbs)



**RODUA**  
Lamp adapter, top 5/8", bottom male COMBITUBE\* connector.

Length overall:	8 cm (3.1")
3/8" thread at top	
Outside dia. top:	16 mm (5/8")
Outside dia. bottom:	25 mm (1")
Weight:	130 g (0.29 lbs)



**CEHUI**  
Exchange sleeve to COMBITUBE\* for various 16 mm (5/8") diameter fittings.

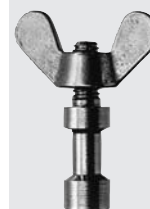
Top inside sleeve Ø:	16 mm (5/8")
Outside Ø:	25 mm (1")
Height:	62 mm (2.4")
Bottom:	
COMBITUBE female cone	
Weight:	170 g (0.37 lbs)

## Interchangeable adapters at 16 mm (5/8") diameter for exchange sleeve CEHUI



**RODAU**  
5/8" all-purpose adapter with 3/8" and 1/4" threads.

Length without thread:	62 mm (2.44")
Outside diameter:	16 mm (5/8")
Weight:	70 g (0.15 lbs)



**RODUE**  
5/8" all-purpose adapter with 3/8" thread and wing nut.

Length without thread:	33 mm (1.3")
Length of thread:	20 mm (0.79")
Outside diameter:	16 mm (5/8")
Weight:	60 g (0.13 lbs)



**RODEA**  
5/8" adapter and adapter for Broncolor lamps.

Bottom length to collar:	32 mm (1.26")
Bottom outside diameter:	16 mm (5/8")
Weight:	95 g (0.21 lbs)

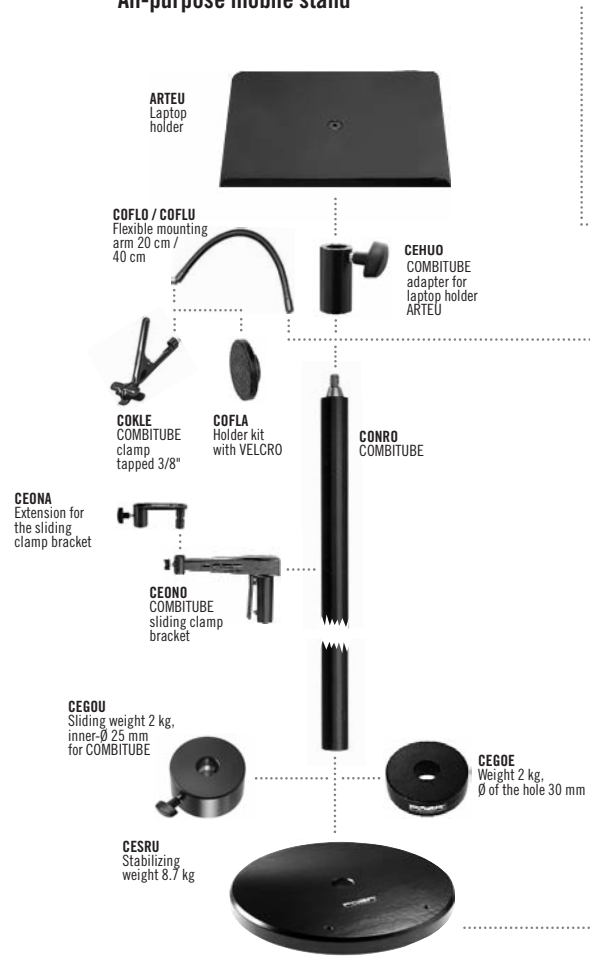
\* Visit [www.foba.com](http://www.foba.com) to learn more about FOBA's practical COMBITUBE system



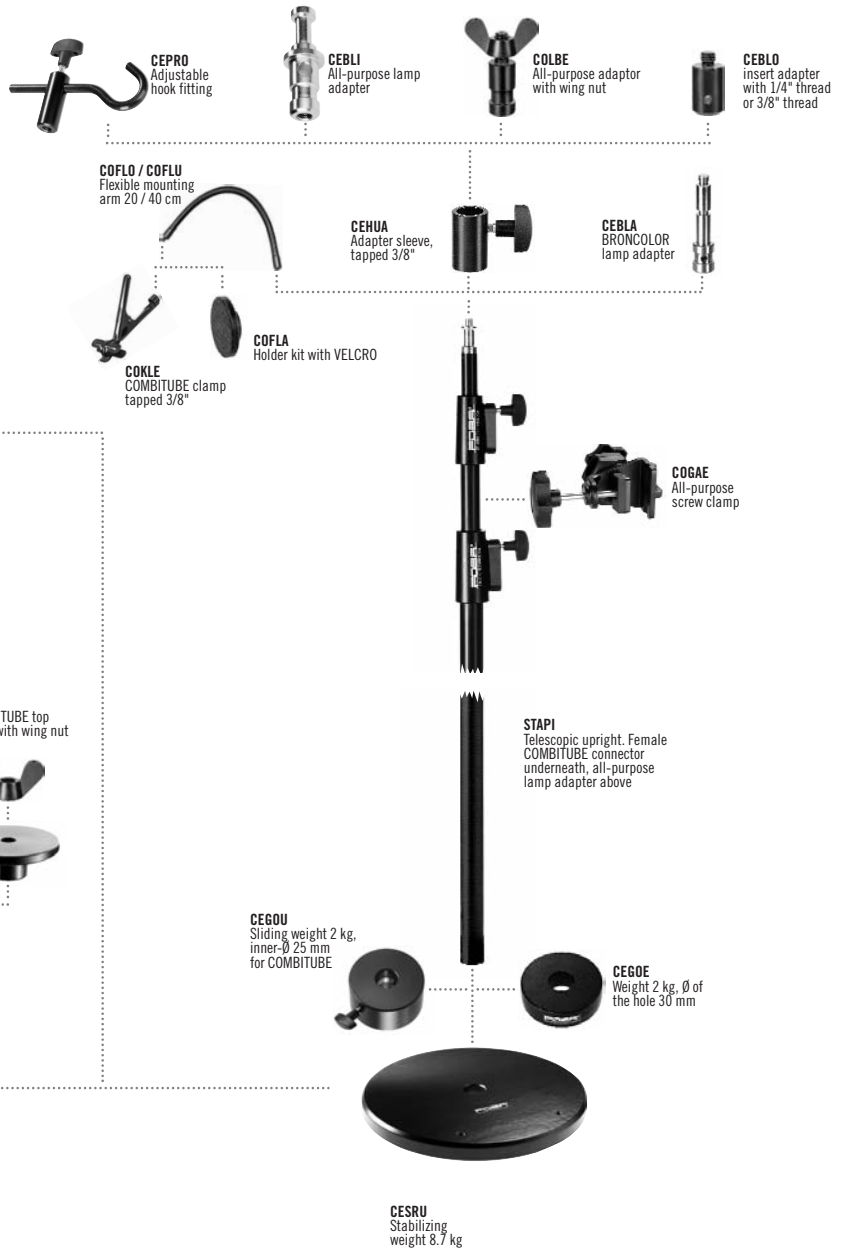
Don't take our word for it:

Dolly STARE is a telling example of the modularity and versatility of FOBA products.

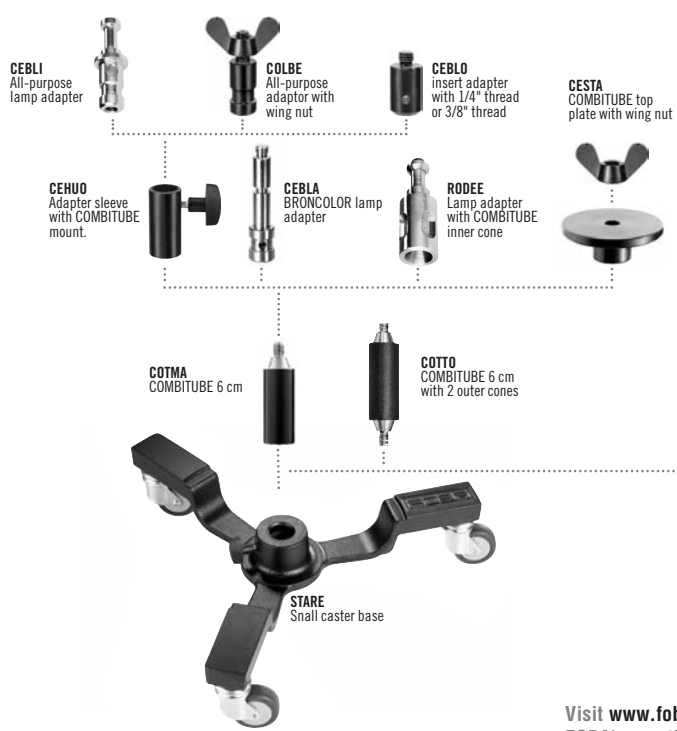
All-purpose mobile stand



Adjustable light stand



Low lamp stand



Visit [www.foba.com](http://www.foba.com) to learn more about FOBA's practical COMBITUBE system

## Index of products

Product	Page	Description
B1x1*	5	Background paper 1.35 x 11m
B1x0*	5	Background paper 2.75 x 11m
B1x3*	5	Background paper 3.55 x 32m
B2000	5	Reference/colour booklet for background paper
* xx represents the colour code according to chart B2000		
BALME	16	Reversible thread converter, set of 5, 1/4" - 3/8"
CAMUN	11	Swivel arm, 7° steps
CEBLA	14, 17	Adapter ,Broncolor lamps, bottom 3/8" tap, Ø 18 mm
CEBLI	14, 15, 17	Lamp adapter 5/8", all-purpose, bottom 3/8" tap, Ø 18 mm
CEBLO 1/4	16, 14, 17	Thread converter, Ø 18 mm, top 1/4" thread, bottom 3/8" tap
CEBLO 3/8	14, 17	Interchangeable adapter Ø 18 mm, top 3/8" thread
CEHUA	14, 17	Exchange sleeve 18 mm, bottom tapped 3/8"
CEHUI	16	Exchange sleeve 16 mm, bottom COMBITUBE
CEHUO	14, 6, 17, 19	Exchange sleeve 18 mm, bottom COMBITUBE
CEONA	14, 17, 19	Extension for sliding clamps CEONO / SAONO
CEONO	14, 15, 17, 19	Sliding clamp for COMBITUBE, hole Ø 25 mm
CEPRO	14, 17, 19	Interchangeable adapter Ø 18 mm, adjustable hook
CESRA	13, 15	Support, large, 9.5 kg with male COMBITUBE connector
CESRO	13, 14, 15	Dolly, large, for tube Ø 30 / 25 mm
CESRU	13, 15, 17	Weighting plate 9.4 kg, for CESRA / STARE
CESTA	16, 17	Top plate with wing nut 3/8", COMBITUBE
COFLA	11, 17	Holder plate with Velcro incl. set of 8 fleece stickers
COFLE	11	Fleece stickers, set of 8, to COFLA, COMEN, ARTEU
COLBE	14, 17	Interchangeable adapter Ø 18 mm with wing nut 3/8"
COLRI	9	Caster to DIMIL / DIMIU, set of 4
COLRU	10	Caster for COMBITUBE, DIGRO / DIBRO
COMEN	11	Holder kit with touch fastener and gooseneck arm
COMON	15	Lamp stand on support plate, 1.6 m with sliding clamp CEONO
CORPO	6, 14, 17	Interchangeable adapter Ø 18 mm, forked, 1 pair, bottom 3/8" tap
COSNO AS	13, 6, 15, 19	Folding tripod, alu, 65 cm, for tube Ø 25 mm
COSTO	13, 6, 15	Folding tripod, steel, 95 cm, for tube Ø 25 mm
DABRO	4	Friction brake with plastic bearing for clamping device DAPAO / DAPAA
DAPAA	4	Clamp inserts, 1 pair, with brake
DAPAO	4, 6	Clamping device with brake, chain included, pair
DAPAU	4	Rubber cleats, set of 6 for DAPAO / DAPAA clamps
DAPLE	9, 8	Acrylic sheet, curved, for table DIMIL, top side non-reflecting
DAPLI	11	Acrylic diffuser tunnel for table DIMIU
DAPLO	11	Acrylic diffuser tunnel for table DIMIL
DAPLU	12	Acrylic sheet 100 x 123 x 0.3 cm, flat
DAPOA	5, 6	Steel tube, stainless, for 2.75 m rolls
DAPOE	5, 6	Fittings set, 2 cones, for 2.75 m rolls
DAPOI	5	Steel tube, stainless, for 3.55 m rolls
DAPOR	5	Fittings set, 2 cones 1 cylinder for 3.55 m rolls
DAPSE	5	Trailing edge strip, 3.50 m
DAPSI	5, 6	Trailing edge strip, 1.30 m
DAPSO	5, 4, 6	Trailing edge strip, 2.75 m
DASRO	6	Mobile stand for unrollers of background for 4 paper- / vinylrolls
DIBRE	10, 8	Acrylic sheet, curved, for table DIBRO, top side non-reflecting
DIBRO	10, 8	Shooting table, large, width 160 cm, top side non-reflecting
DIDRI	9, 8	Acrylic sheet, curved, for table DIMIU, top side non-reflecting
DIDRU	9	Frame for table DIMIU, aluminium pipes
DIGRO	10, 8	Shooting table, large, width 130 cm, top side non-reflecting
DIMIA	8	Acrylic sheet, curved, for table DIMIC, top side non-reflecting
DIMIC	8	Shooting table, mini, width 50 cm, top side non-reflecting
DIMIE	9	Frame for table DIMIL, aluminium pipes
DIMIL	9, 8, 11, 15	Shooting table, middle, width 123 cm, top side non-reflecting
DIMIR 40	8	Legs 40 cm for shooting table DIMIC, COMBITUBE kit
DIMIU	9, 8, 11	Shooting table, small, width 90.5 cm, top side non-reflecting
DITRE	12	Non-reflecting velours, black 1.32 x 5.9 m
DITRO	12	Diffusor sheet, opal, 1.37 x 5.4 m
DODRE	4	Unroller, triple, for wall or ceiling
DOPLE	10, 8	Acrylic sheet, curved, for table DIGRO, top side non-reflecting
DOPLO	10	Side brackets to DIGRO / DIBRO and COMBITUBE, pair
DORPA	4	Hook strip for ceilings, triple, 1 pair
DORPE	4	Hook strip, wall / ceiling, single, 1 pair
DORPO	4	Hook strip, wall / ceiling, triple, 1 pair
DUPEE	4	Chain wheel for unrollers DAPAO / DAPAA
DUPIE	4	Chain for wheel DUPEE



Get the best for your shooting table: FOBA articulated arms. They integrate best in the COMBITUBE system of FOBA.



### Shooting setup for small subject:

The table is made with COMBITUBE 80 cm **CONRO AS** on a lightweight folding tripod **COSNO AS**, topped by round accessory tray **COTIO**. 2 **STAPU** kits hold the lamps, whose light is mellowed by a **DUPL** cone placed on **COTIO**.



Much more useful than its size suggests: hook adapter **CEPRO** holds cables safely away from the shooting area, as shown. Interchangeable sleeve **CEHUO** keeps it atop a COMBITUBE.

## Index of products

Product	Page	Description
DUPL	12, 19	Acrylic cone, large
DUPLI	12	Acrylic cone, small
F6xx1*	20	TT-PLAST plastic background sheet, 130 x 100 cm, single sheet rolled in cardboard
F6xx0*	20	TT-PLAST plastic background sheet, 130 x 100 cm, 10 sheets of same colour
* xx represents the colour code according to chart F6300		
F6200	20	TT-PLAST set of 14 colours boxed, 1 sheet per colour, 130 x 100 cm
F6300	20	TT-PLAST reference / colour chart
RODAU	16	All-purpose adapter 3/8" and 1/4"-thread
RODEA	16	Adapter for Broncolor lamps
RODEE	16, 13, 15, 17	Lamp adapter, female COMBITUBE connector
RODUA	16	Lamp adapter, male COMBITUBE connector
RODUE	16	Adapter with wing nut, 3/8", all-purpose
SANRO 2	14, 15, 13	Upright for lamp stand, 2.0 m, Ø 30 mm, stainless steel, for CESRO
SANRO 3	14, 15, 13	Upright for lamp stand, 3.0 m, Ø 30 mm, stainless steel, for CESRO
SAONO	14, 15	Sliding clamp, hole Ø 30 mm for SANRO
STAPI	14, 15, 17, 6	Telescopic upright, COMBITUBE connector
STAPU	15, 16, 19	Stand, foldable, telescopic, 1.95 m, lightweight
STARE	13, 15, 17	Dolly, small, for COMBITUBE (Ø 25 mm)
STARI 2	15	Lamp stand on casters, 2.0 m with sliding clamp SAONO
STARI 3	15	Lamp stand on casters, 3.0 m with sliding clamp SAONO
SUDRA	16	Small generator holder for lamp stands



Lights from above: lamp on sliding clamp **CEONO** with extension **CEONA**, hanging from a FOBA ceiling rail system. Safety ring **CEGEE 25** keeps the lamp from accidentally sliding off the COMBITUBE.



## Did you want to know more about FOBA products mentioned without detailed description in the current catalogue?

Product	Mentioned on page	Description	Find more in catalogue
ARTEU	17, 11	Holder for laptops, 17"	Studio Stands
ASMIO	12	Tilting head	Tripod Heads
ASNEO	12	Clamp stand, aperture 73 mm, length 27 cm	Tripod Heads
CEBRO	11	Support, 1.1 kg, male COMBITUBE connector	COMBITUBE
CEGEE 25	11, 19	Safety ring, hole Ø 25mm, COMBITUBE	COMBITUBE
CEGOE	17	Weight 2 kg, hole Ø 30 mm	Studio Stands
CEGOU	11, 17	Sliding weight 2 kg, inner-Ø 25 mm for COMBITUBE	COMBITUBE
CESTO	6	Plate, round, with 3/8" stub screw	COMBITUBE
COARO	14, 9	COMBITUBE 20 cm	COMBITUBE
CODEA	10	Right-angle connector	COMBITUBE
CODIO	6	Cross connector for 2 COMBITUBE	COMBITUBE
COFLO	11, 17	Gooseneck arm 20 cm	COMBITUBE
COFLU	9, 17	Gooseneck arm 40 cm	COMBITUBE
COGAE	17	All-purpose screw clamp, aperture 45 mm	COMBITUBE
COGEA	11	Articulated connector, 7° steps, set of 2	COMBITUBE
COGEU	11	Articulated connector, 360°, continuous	COMBITUBE
COGUO	6, 10	Plastic foot for COMBITUBE, set of 2	COMBITUBE
COKLE	9, 11, 17	COMBITUBE clamp, 3/8" tapped sleeve	COMBITUBE
COKLO	11	COMBITUBE clamp	COMBITUBE
COKRO	14, 6, 11	COMBITUBE 40 cm	COMBITUBE
COKTO	14, 15	COMBITUBE 160 cm	COMBITUBE
CONRO	14, 6, 10, 15, 17, 19	COMBITUBE 80 cm	COMBITUBE
COTIO	17, 19	Round accessory tray, COMBITUBE connector	COMBITUBE
COTMA	14, 17	COMBITUBE 6 cm	COMBITUBE
COTTO AS	17	Tube, 6 cm, 2 male COMBITUBE conn. alu, black	COMBITUBE
COTWE	6	Tube, 6 cm, 2 female COMBITUBE conn., alu, black	COMBITUBE

## Indestructible: FOBA TT-Plast

FOBA TT-Plast washable plastic background sheets last (almost) forever. Cleaning is no problem with plain or soapy water. FOBA TT-Plast 100 x 130 cm, 0.3 mm thick sheets are available in 14 different colours. Much appreciated by photographers when they don't want to risk to damage a more delicate background with wet or dirty objects. FOBA TT-Plast plastic background sheets are very helpful for many different kinds of shooting thanks to their perfectly smooth surface without structure.



Colour sample		1 unit wrapped individually in a cardboard tube	10 units wrapped in a cardboard tube
	white	F6001	F6000
	red	F6011	F6010
	orange	F6021	F6020
	yellow	F6031	F6030
	lemon	F6041	F6040
	light green	F6051	F6050
	green	F6061	F6060
	blue	F6071	F6070
	deep blue	F6081	F6080
	dove grey	F6091	F6090
	grey	F6101	F6100
	dark brown	F6111	F6110
	brown	F6121	F6120
	black	F6131	F6130

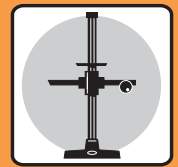
### TT-Plast features:

- long-lasting
- washable
- smooth, no structure
- can be used many times
- Size: 130 cm x 100 cm x 0.3 mm (51,2" x 39,4" x 0,012")

Subject to slight changes of the colour due to UV light.

F6200: Set with all 14 colours in a cardboard tube.

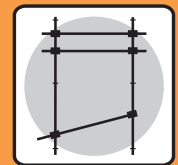
## FOBA product lines



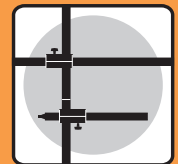
FOBA STUDIO STANDS, TRIPODS  
FOBA STATIVE  
FOBA PIÈDS À COLONNE, TRÉPIEDS



FOBA TRIPOD HEADS  
FOBA STATIVKÖPFE  
FOBA TÊTES DE TRÉPIEDS



FOBA CEILING RAIL SYSTEM  
FOBA DECKENSCHIENEN-SYSTEM  
FOBA SYSTÈME RAILS DE PLAFOND



FOBA COMBITUBE SYSTEM  
FOBA COMBIROHR® SYSTEM  
FOBA SYSTÈME COMBITUBE



FOBA SHOOTING TABLES  
FOBA AUFNAHMETISCHE  
FOBA TABLES DE PRISE DE VUE



FOBA TURNTABLES  
FOBA DREHTELLER  
FOBA TABLES TOURNANTES

**FOBA**<sup>®</sup>  
STUDIO-TECHNOLOGY

FOBA AG  
Studio-Technology  
Friedgrabenstrasse 21  
CH-8907 Wettswil  
Switzerland

☎ +41 44 701 90 00  
☎ +41 44 701 90 01

✉ info@foba.com  
www.foba.com

- greater security
- greater stability
- greater modularity